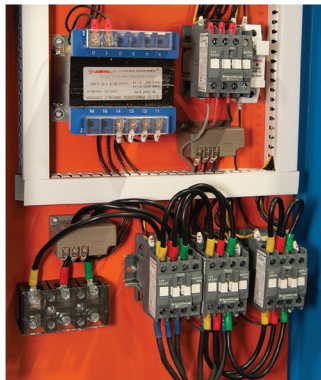


Workhorse Screw

High performance 100% duty complete rotary screw packages

Key Features

- IE3 High efficiency motors
- Microprocessor controlled panel
- Low noise levels
- Star/delta starting
- Belt driven for reduced power loss
- Triple separation of oil & air ensures low oil carry over
- Ready to go package – no expensive pipework required
- Complete with refrigerated dryer ready for use
- Easy panel access for service intervals



Schneider electrical components



Fitted with 5 micron pre filter & 0.01 micron after filter



Model	HP	CFM	Max Pressure (Bar)	Tanks (litres)	Voltage	Sound Pressure dB(A)	Dimensions (mm)	Weight (Kg)
WRSC10D/300	10	35.3	10	300	400	64	1790 x 800 x 1647	450
WRSC15D/300	15	52.5	10	300	400	67	1890 x 800 x 1787	750
WRSC20D/300	20	77.7	10	300	400	67	1890 x 800 x 1787	780